



AVENUE LINK LITE

SMALL CELL BACKHAUL

SOLVE YOUR SMALL CELL BACKHAUL CHALLENGE WITH THE AVENUE LINK LITE - AN INTEGRATED ZONING-FRIENDLY PACKET MICROWAVE SOLUTION OPTIMIZED FOR URBAN ENVIRONMENTS.

Avenue Link Lite is a complete sub-6 GHz microwave system housed within a single all-outdoor unit with standard Ethernet interfaces and integrated antenna. This packet microwave radio offers a host of benefits, including:

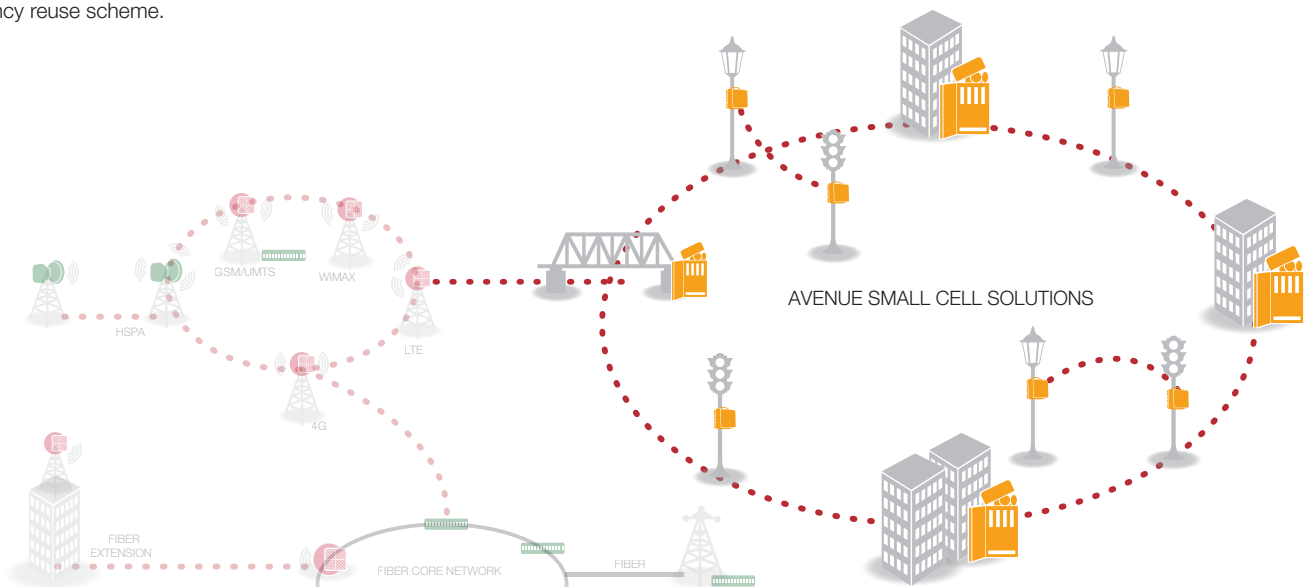
- Non-line-of-sight (NLOS) support across both licensed and unlicensed TDD spectrum
- Complete scalability, supporting 5/10/20/40 MHz channel bandwidth
- Advanced Interference avoidance features including site synchronization, Dynamic Frequency Selection, Transmit Power Control
- Flexible network architecture options

Engineered to provide the greatest flexibility for mobile operators, the Avenue Link Lite can be deployed to any number of structures including street lamps, traffic light poles, or building sides. Installation is fast, simple and easily managed by a single installer without the use of heavy equipment, ensuring virtually no disruption to city operations.

When using unlicensed spectrum, the Avenue Link Lite facilitates fast and easy deployment and savings on spectrum licensing, resulting in reduced operating expenses and a rapid return on investment for the operator. A complete set of interference counter measures guarantees proper behavior even in an unlicensed environment. When deployed using licensed spectrum, the Avenue Link Lite allows a 1:1 frequency reuse scheme.

SOLUTION HIGHLIGHTS

- Small cell-optimized backhaul for NLOS applications
- Integrated flat-mini antenna
- Zoning-friendly, environmentally hardened enclosure
- Simple single cable repeater configuration
- NLOS and LOS options
- Unparalleled backhaul performance:
 - Pay-as-you-grow bandwidth scalability
 - Up to 200 Mbps aggregate capacity
 - OFDM adaptive modulation with 2x2 MIMO option
 - License free or licensed spectrum
 - Advanced QoS with 8 levels of prioritization
 - SyncE and 1588v2 support
 - Green design - minimal footprint and less than 15 W power consumption
 - Comprehensive management for simple configuration and provisioning with DragonView NMS



AVENUE LINK LITE

PRODUCT SPECIFICATIONS

RF Band	2.3 to 2.6 GHz; 3.4 to 3.8 GHz; 5.15 to 5.875 GHz
Diplexing Scheme	TDD
Interfaces	2xFE/GE Interfaces
Modulation	OFDM adaptive modulation, with 2x2 MIMO
Channel Spacing	5/10/20/40 MHz
Power Consumption	<15 Watts
Throughput	Up to 200 Mbit/s aggregate with 2x2 MIMO Up to 100 Mbit/s aggregate without MIMO
Mechanical Size (Microwave and integrated antenna)	19 x 19 x 5 cm (with 0.5 foot integrated antenna) 37 x 37 x 7 cm (with 1 foot integrated antenna)
Installation	Fully Outdoor; pole and wall mounting
Powering	Via Ethernet P + E/PoE+; optional Power Injector with AC or DC input
Ethernet OAM	Connectivity Fault Management (CFM), according to 802.1ag and ITU-T Y.1731. Performance monitoring (PM) according to ITU-T Y.1731.
Synchronization Support	Synchronous Ethernet (SyncE), 1588-2008 (ToP)
Interference Avoidance Features	Site Synchronization, Dynamic Frequency Selection (DFS), Transmit Power Control (TPC), 1 + 1 polarization diversity
Management system	DragonView